



› Case study

A bespoke lifting solution to access multiple levels



COMPANY

Mietservice Süß GmbH & Co. KG

DATE

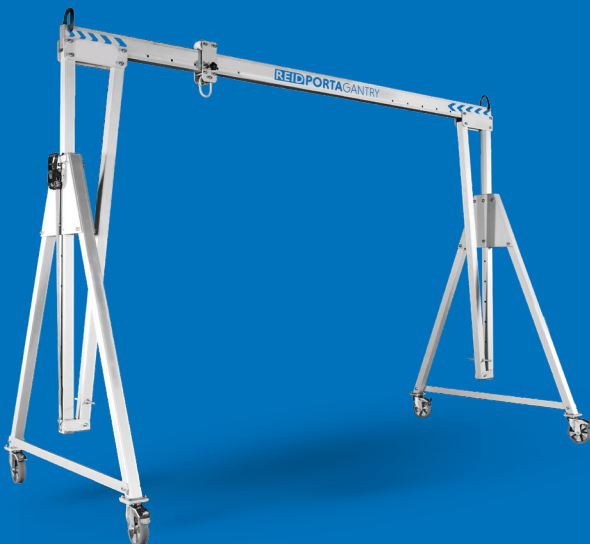
2021

LOCATION

Munich, Germany

PRODUCT

PORTAGANTRY



A company within the medical industry in Munich needed to install several exhaust air devices onto a first floor building with restricted space. They contacted REID's channel partner Mietservice Süß GmbH & Co. KG for a practical and capable lifting solution.

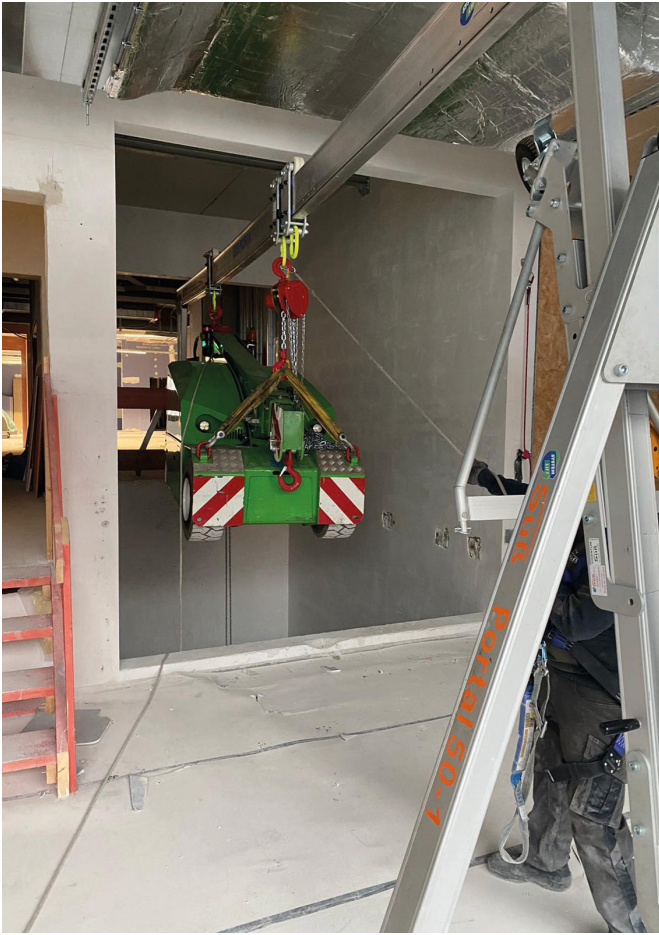
The background

The company is a biotechnology and radiopharmaceutical company who develop and produce therapeutic radiopharmaceuticals and radioisotopes for use in cancer treatment across the world.

They needed to install several exhaust air devices onto the first floor of the radiopharmaceutical research department in Munich, Germany.

The challenge

With space within the building restricted, a small crane, which will later be used to lift the exhaust air devices, and the exhaust air devices needed to be lifted from the ground floor up to the first floor, which was only possible through the elevator shaft which was 6m wide.



Additionally, each side of the elevator shaft was on different levels with a restricted height, therefore the requirement was for a lifting solution which was suitable for these different levels and can lift up to 3000kg in a restricted space.

The solution

They contacted REID's channel partner Mietservice Süß GmbH & Co. KG who recommended a combination of two 3000kg **PORTAGANTRY** A-frames which could accommodate lifting the 2900kg crane and the exhaust air devices.

As there was a 7m difference in the two levels, two standard A-frames were rented to them, one small and one tall which were coupled together with a standard 8.4m beam to allow for sufficient space across the 6m elevator shaft. Because the **PORTAGANTRY** system allows for beams and A-frames to be interchanged, it was possible to put together a bespoke solution using two standard gantries from the range they hold in stock.

Each of the **PORTAGANTRY** A-frames is designed with incremental height adjustment holes, the small A-frame was assembled with on one of the taller settings with the tall A-frame assembled on the smallest setting, this supported in ensuring the beam was horizontal before completing the lift.

This bespoke system was supplied with two of REID's master link trollies which are compatible with lifting hoists, using two trollies creates an added point of lift from the **PORTAGANTRY** increasing the safety.

The small crane and exhaust air devices were safely lifted from the ground floor up through the elevator shaft then traversed along the beam in a controlled manner to be placed onto the first floor, where the **PORTAGANTRY** 3000kg was the perfect solution.

The feedback

This company were pleased with how lightweight and easy to assemble the **PORTAGANTRY** was as well as being strong enough to lift the small crane and exhaust air devices.

The use of interchangeable A-frames made it ideal for this application allowing the team to overcome the challenges within the building.



Get in touch to find out how we can help with your lifting and lowering requirements:

➤ +44 (0)1291 620 796 ➤ enquiries@reidlifting.com ➤ www.reidlifting.com