

PORTA-DAVIT[®] 1000



No. 1 in lightweight, portable, safe lifting solutions

1000Kg
WLL

39kg
bagged

The *PORTA-DAVIT* 1000 further extends the *PORTA-DAVIT* family with WLL 1000kg.

PATENT PENDING

Patent Pending, Design Rights, Trade Mark and Trade Name protection



Standard Dimensions

Radius: 800 to 1,200mm

Height to lifting shackle

point: = 2,000mm

Easy to assemble instructions included with every product





LEEA Membership

ISO 9001

ISO 14001

OHSAS 18001

The Queen's Award for Enterprise Innovation

LIGHTWEIGHT ■ PORTABLE ■ SAFE

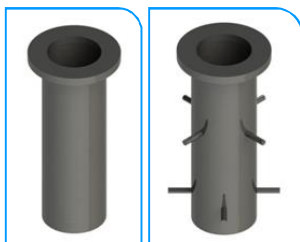
LIFTING INNOVATION

FEATURES

- ~ Goods rated up to WLL 1000kg to 1200mm radius
 - ~ Radius adjustments from 800 up to 1200mm
 - ~ System design safety factors >4:1 with kingpin designed to provide protection against system overloading
 - ~ Assembly & operation by one person with just 3 component parts without tools
 - ~ Twin shackles for index lifting
 - ~ Raised jib root for "over reach" applications
 - ~ Custom systems to 2500mm radius*
 - ~ Wide range of sockets
 - ~ Total assembled weight just 39kg
 - ~ Heavy duty bag for ease of transportation & protective storage.
 - ~ Fits into a typical service van
- * WLL is reduced when radius extended beyond 1200mm



PD1000 SOCKETS



Flush Mount



Top Mount



In Top Mount



Side Mount

PD1000PO/EN/V3/13/02